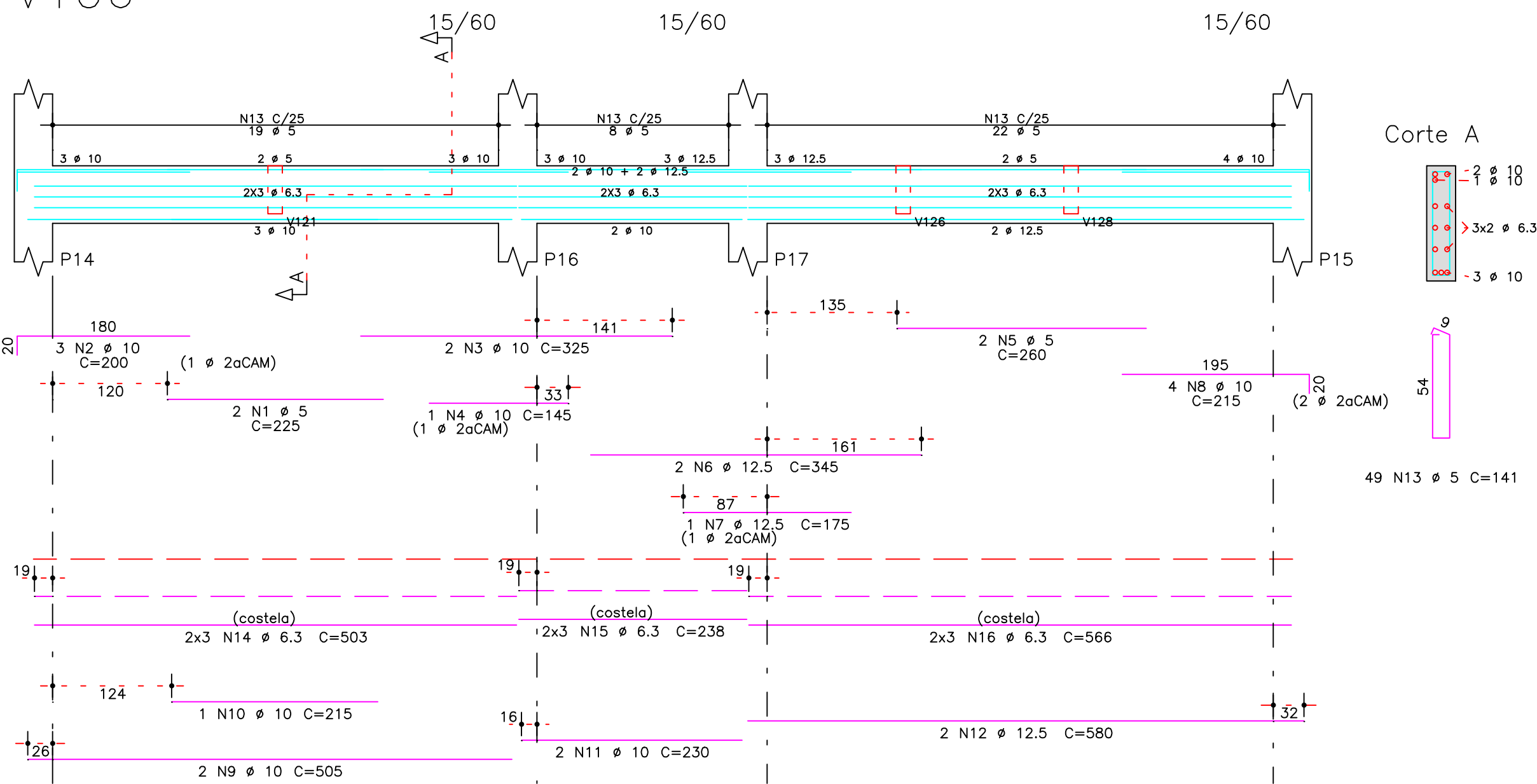
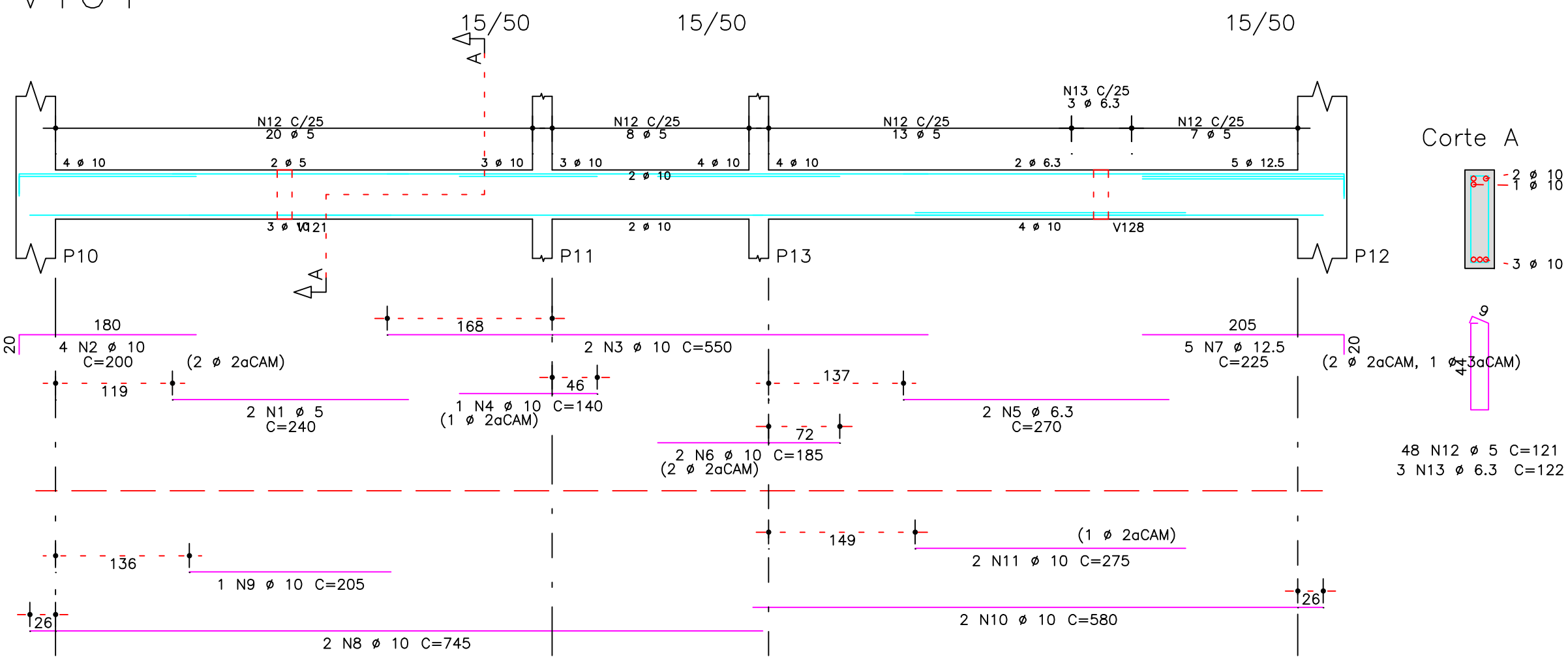


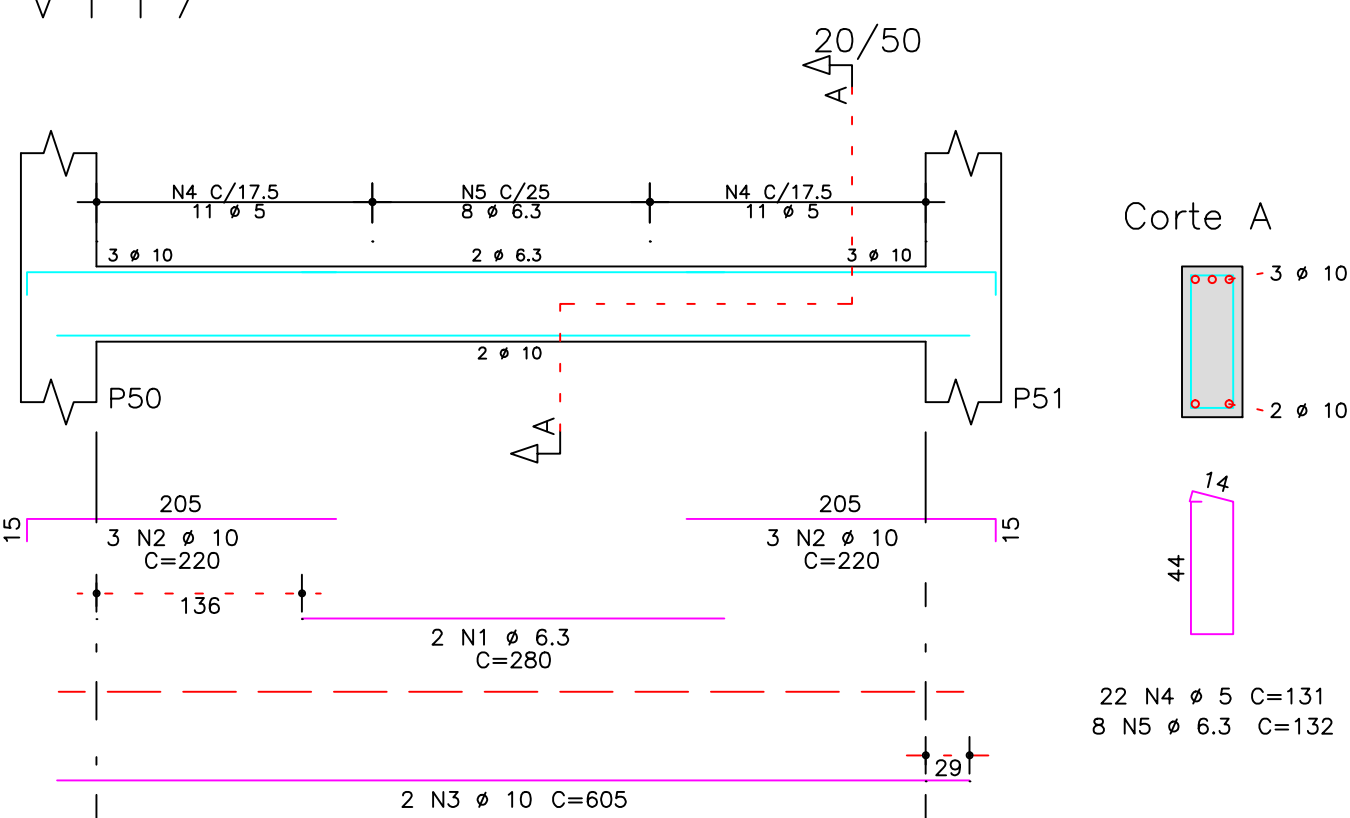
V106



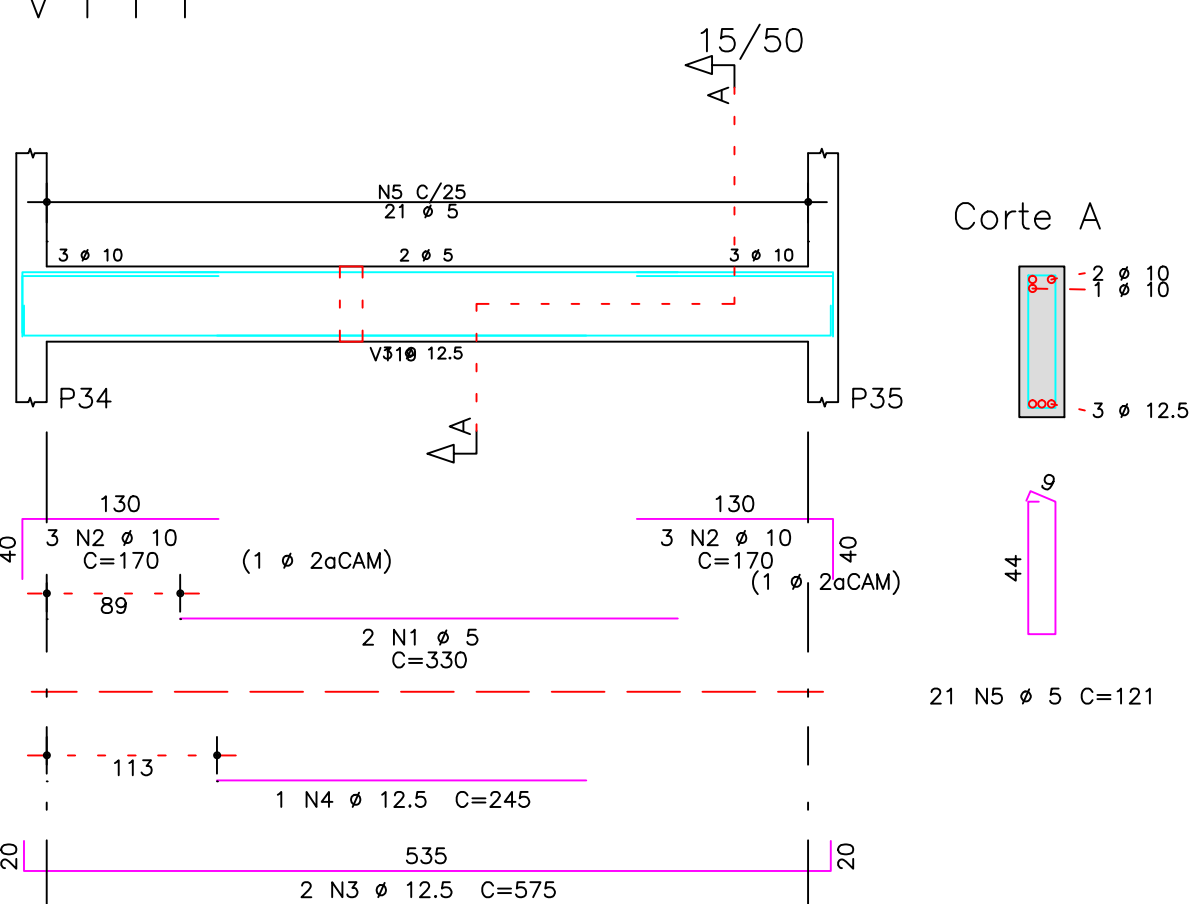
V104



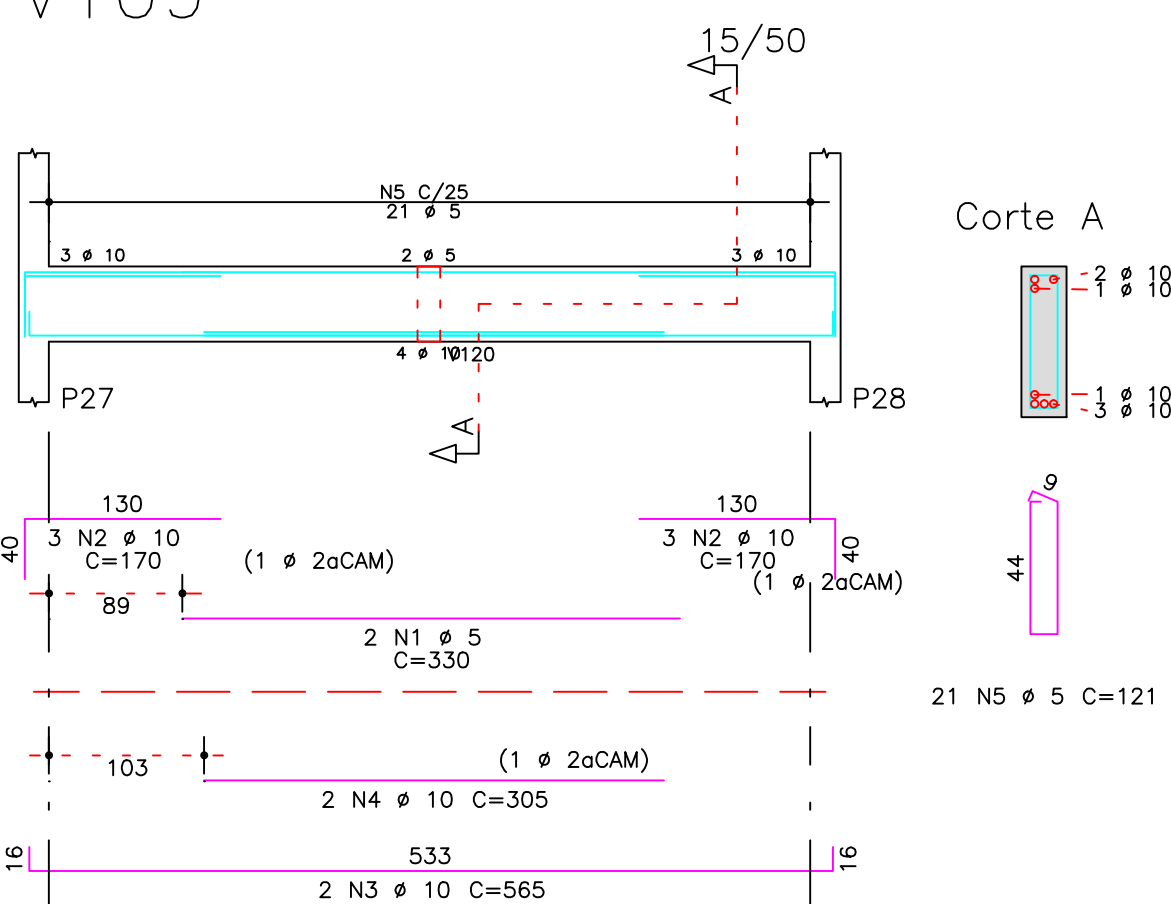
V117



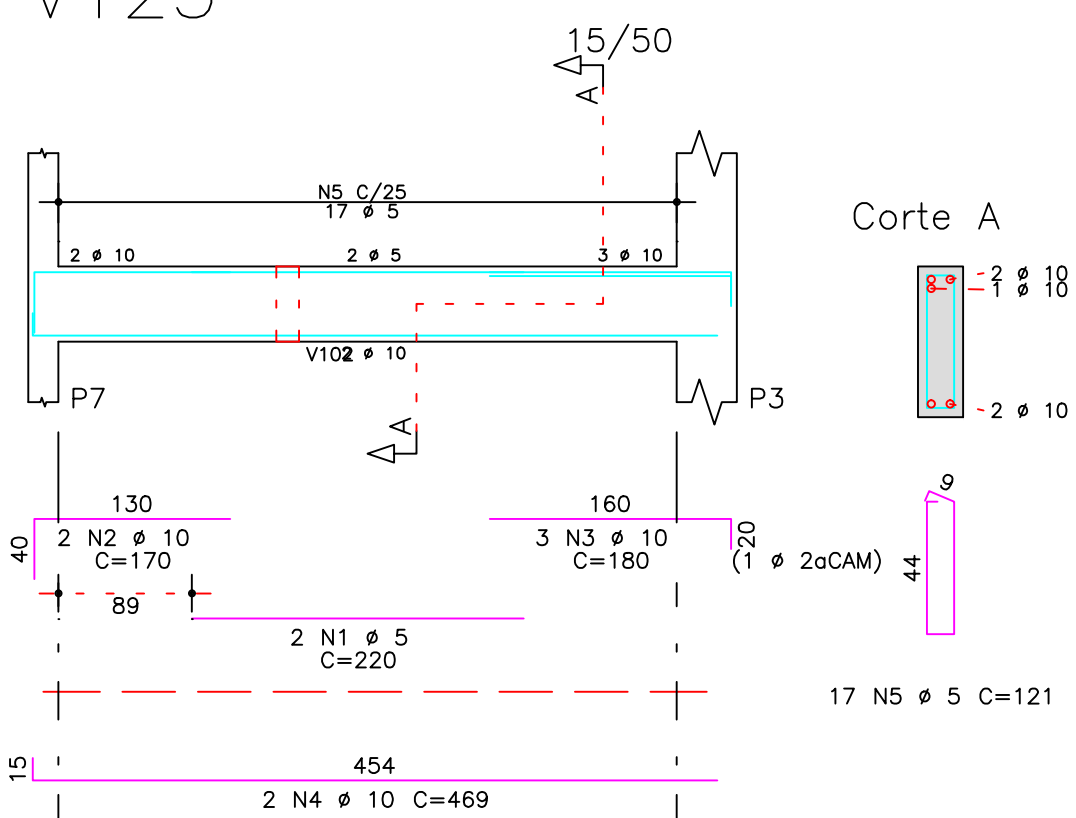
V111



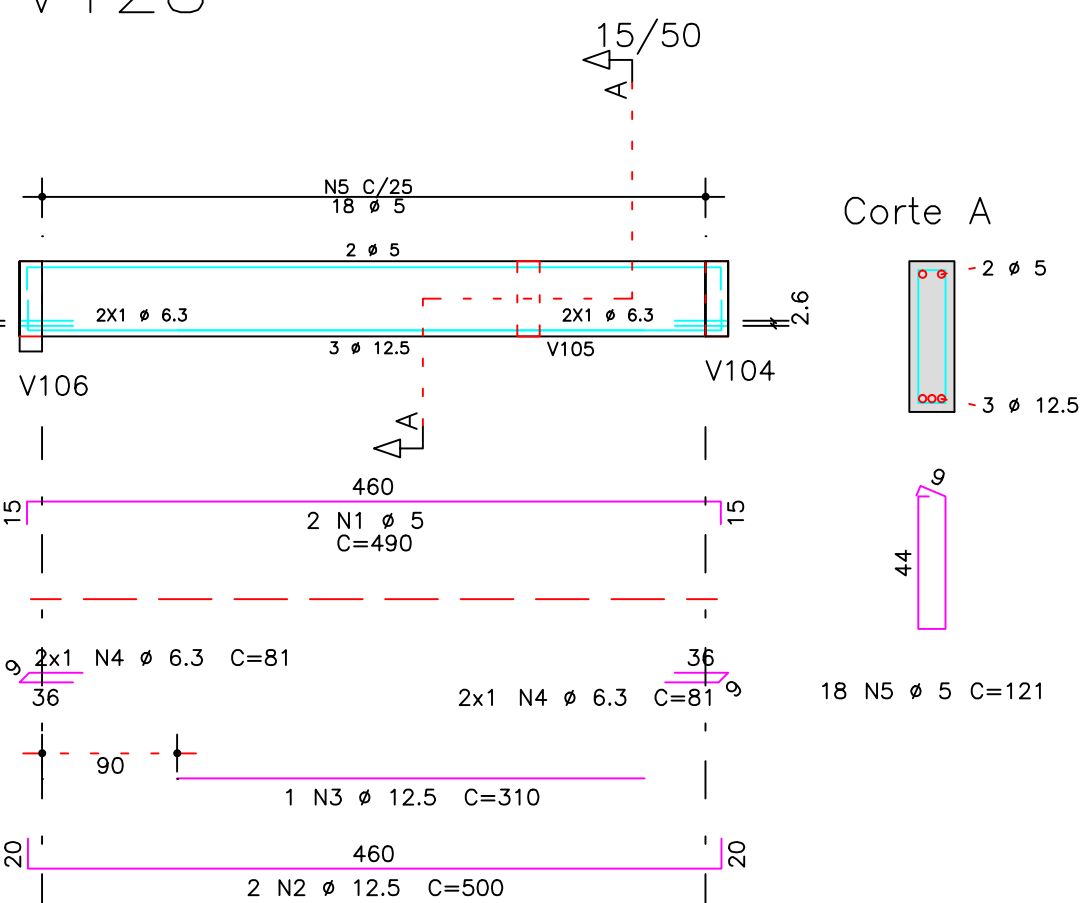
V109



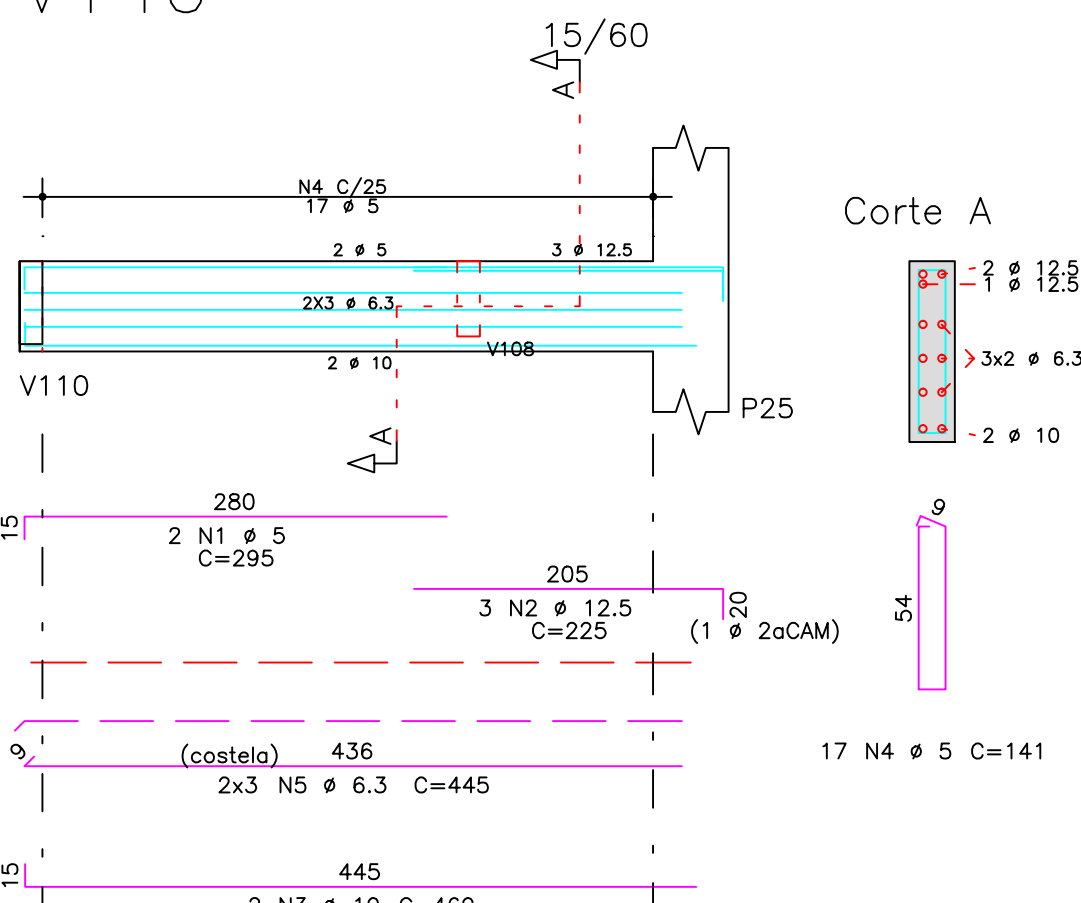
V123



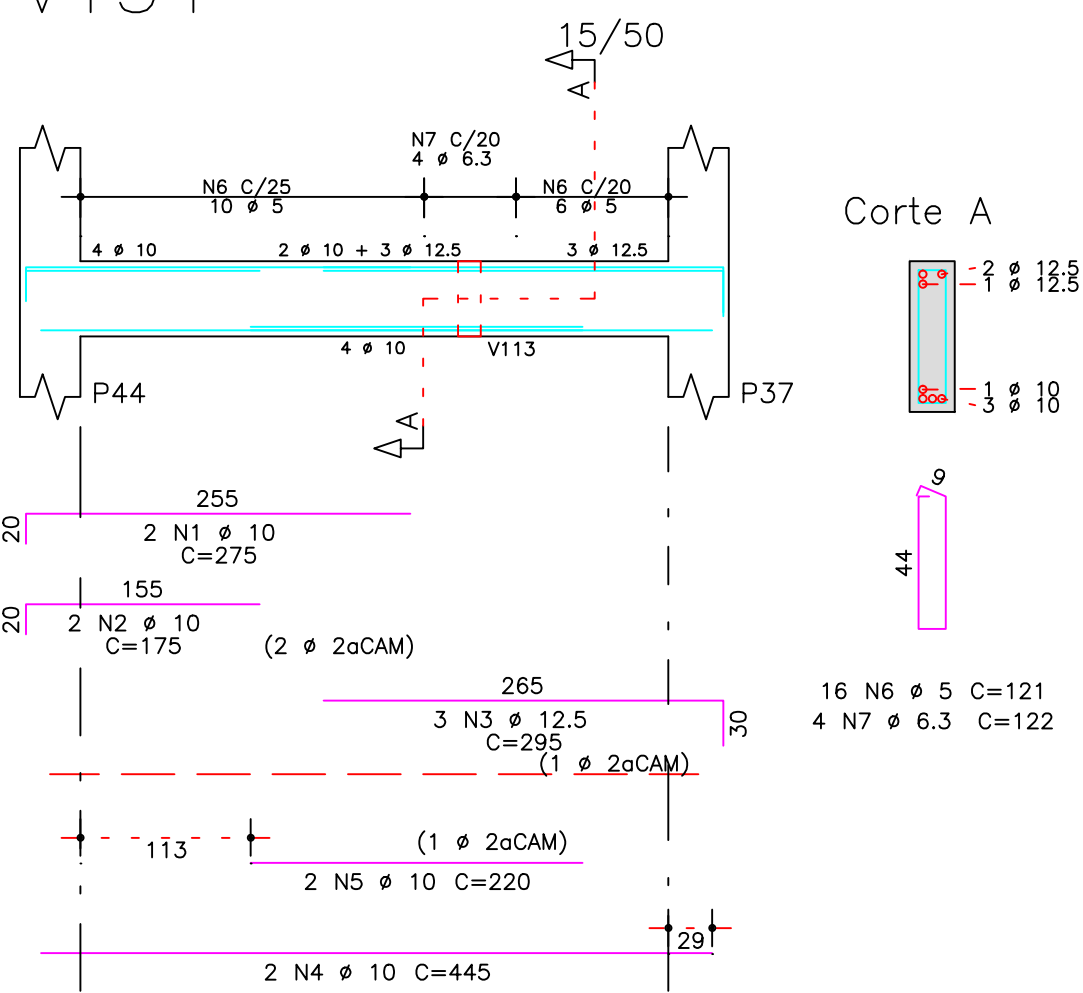
V128



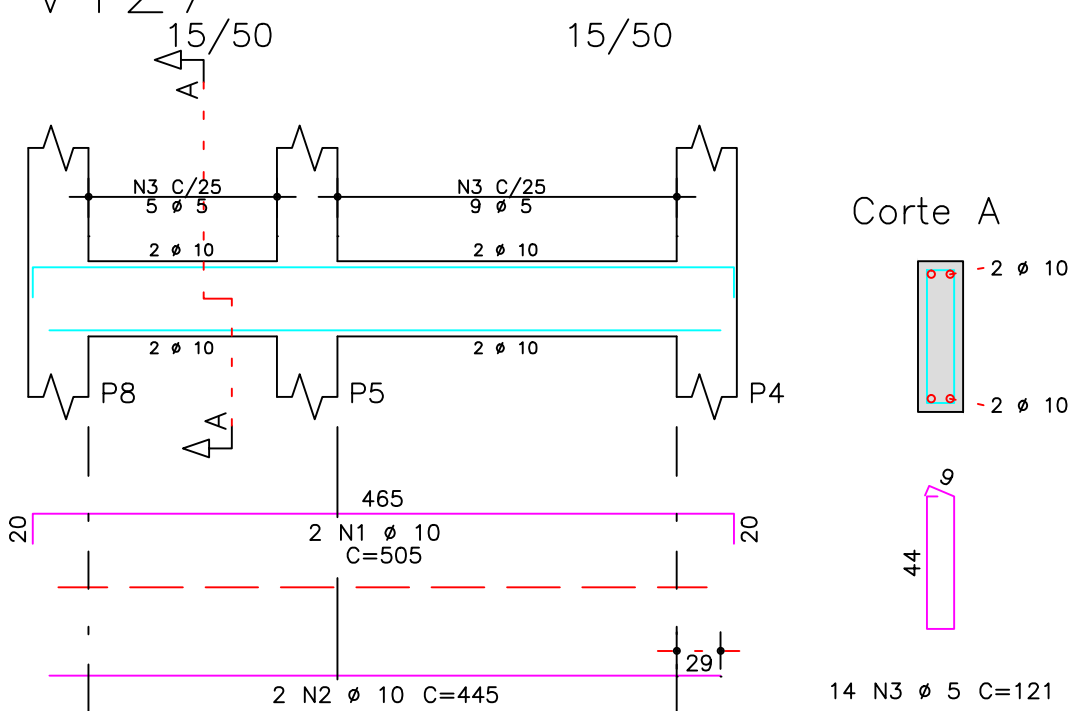
V140



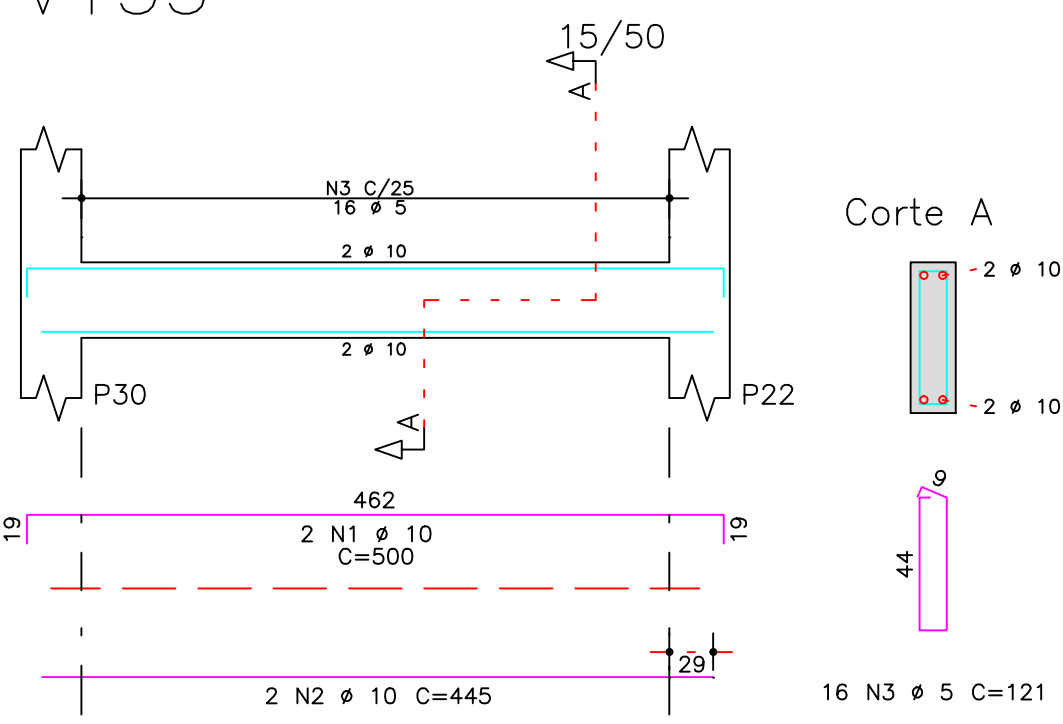
V134



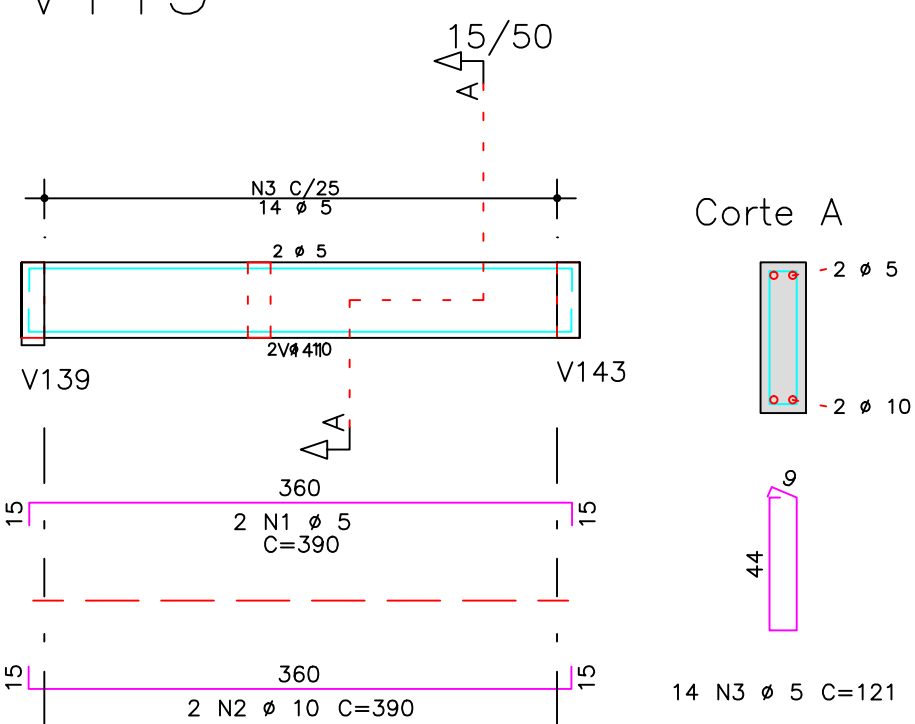
V127



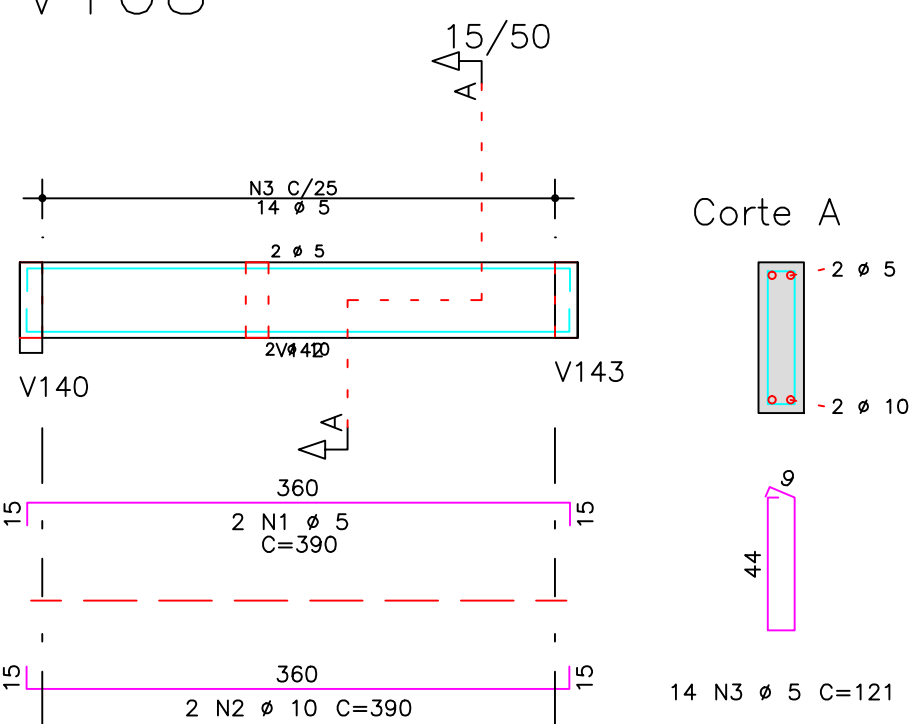
V133



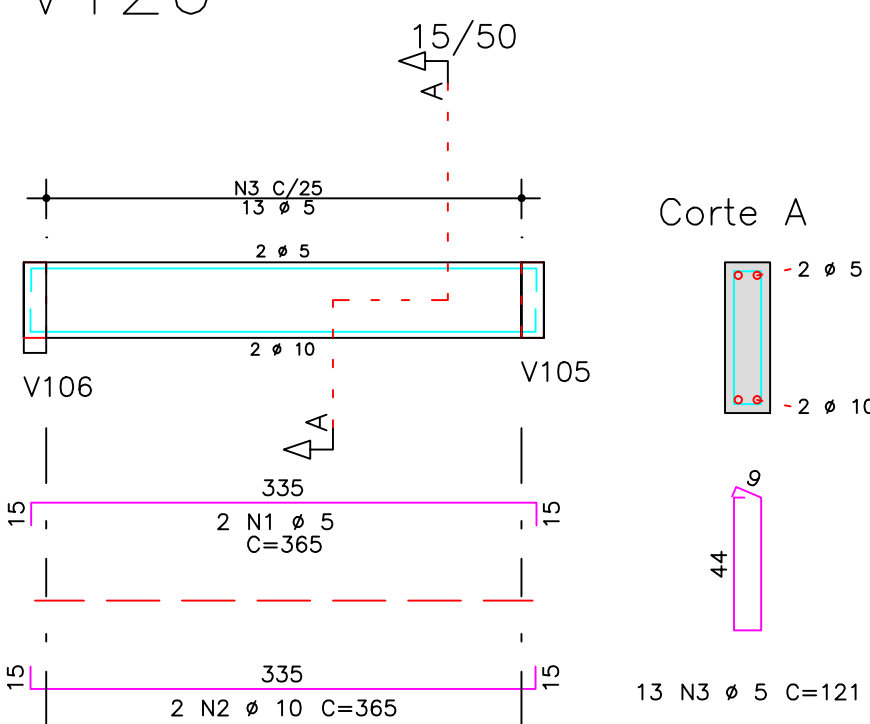
V115



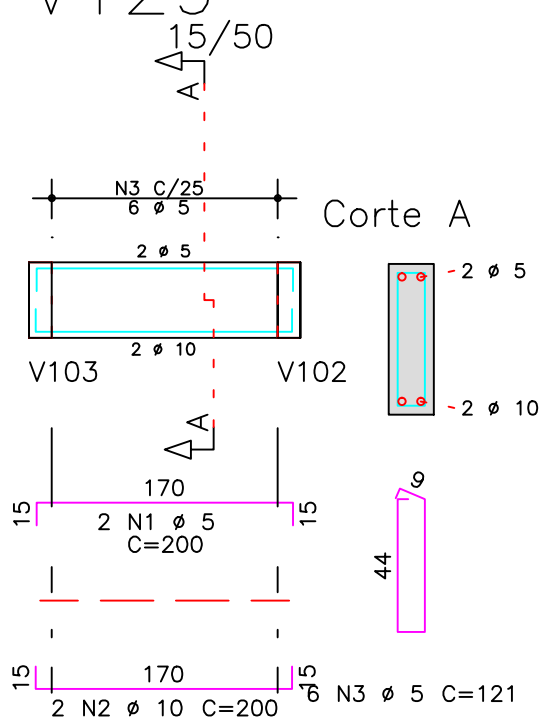
V108



V126



V129



	AÇO	POS	BIT (mm)	QUANT	COMPRIMENTO UNIT (cm)	TOTAL (cm)
V104	60B	1	5	2	240	480
	50A	2	10	4	200	800
	50A	3	10	2	550	1100
	50A	4	10	1	140	140
	50A	5	6.3	2	270	540
	50A	6	10	2	185	370
	50A	7	12.5	5	225	1125
	50A	8	10	2	745	1490
	50A	9	10	1	205	205
	50A	10	10	2	580	1160
	50A	11	10	2	275	550
	60B	12	5	48	121	5808
	50A	13	6.3	3	122	366
V106	60B	1	5	2	225	450
	50A	2	10	3	200	600
	50A	3	10	2	325	650
	50A	4	10	1	145	145
	60B	5	5	2	260	520
	50A	6	12.5	2	345	690
	50A	7	12.5	1	175	175
	50A	8	10	4	215	860
	50A	9	10	2	505	1010
	50A	10	10	1	215	215
	50A	12	12.5	2	580	1160
	60B	13	5	49	141	6909
	50A	14	6.3	6	503	3018
V108	50A	15	6.3	6	238	1428
	50A	16	6.3	6	566	3396
V109	60B	1	5	2	390	780
	50A	2	10	2	390	780
	60B	3	5	14	121	1694
V111	60B	1	5	2	330	660
	50A	2	10	6	170	1020
	50A	3	10	2	565	1130
	50A	4	10	2	305	610
	60B	5	5	21	121	2541
V115	60B	1	5	2	330	660
	50A	2	10	6	170	1020
	50A	3	12.5	2	575	1150
	50A	4	12.5	1	245	245
	60B	5	5	21	121	2541
V117	60B	1	5	2	390	780
	50A	2	10	2	390	780
	60B	3	5	14	121	1694
V123	50A	1	6.3	2	280	560
	50A	2	10	6	220	1320
	50A	3	10	2	605	1210
	60B	4	5	22	131	2882
	50A	5	6.3	8	132	1056
V126	60B	1	5	2	220	440
	50A	2	10	2	170	340
	50A	3	10	3	180	540
	50A	4	10	2	469	938
	60B	5	5	17	121	2057
V127	60B	1	5	2	365	730
	50A	2	10	2	365	730
	60B	3	5	13	121	1573
V128	50A	1	10	2	505	1010
	50A	2	10	2	445	890
	60B	3	5	14	121	1694
V129	60B	1	5	2	490	980
	50A	2	12.5	2	500	1000
	50A	3	12.5	1	310	310
	50A	4	6.3	4	81	324
	60B	5	5	18	121	2178
V133	60B	1	5	2	200	400
	50A	2	10	2	200	400
	60B	3	5	6	121	726
V134	50A	1	10	2	500	1000
	50A	2	10	2	445	890
	60B	3	5	16	121	1936
	50A	1	10	2	275	550
	50A	2	10	2	175	350
	50A	3	12.5	3	295	885
	50A	4	10	2	445	890
V140	50A	5	10	2	220	440
	60B	6	5	16	121	1936
	50A	7	6.3	4	122	488
	60B	1	5	2	295	590
	50A	2	12.5	3	225	675
	50A	3	10	2	460	920
	60B	4	5	17	141	2397
RESUMO AÇO CA 50-60						
	AÇO	BIT (mm)	COMPR (m)	PESO (kg)		
	60B	5	460	71		
	50A	6.3	138	34		
	50A	10	275	170		
	50A	12.5	74	71		
	Peso Total	60B =		71 kg		
	Peso Total	50A =		275 kg		

O acesso ao Modelo Estrutural em dimensão pode ser executado pelo QR CODE ao lado, podendo acessar via celulares, tablets e quaisquer outros dispositivos.



Schuring & Schuring Ltda. Escritório Técnico B.E.SCHURING - Projetos de Engenharia Av. XV de Novembro, 489 - Porto 2o. Andar - Curitiba MT Fone:(065) 321 9959 - Fax:(065) 623 5066 - E-mail - schuring@terra.com.br	
PROJETO: PROPRIETÁRIO: PREFEITURA MUNICIPAL VARZEA GRANDE MT RESP. TEC. EXECUÇÃO:	OBRA: PREFEITURA MUNICIPAL DE VARZEA GRANDE MT Unid. Básica de Saúde UBS-MATILDE CURVO DE MORAES END.: Av. dos Bandeirantes. Conj. Habit. José Carlos Guimarães, Varzea Grande-MT
AUTORES DO PROJETO: Eng. Civil Benedito Elias Schuring CREA 715/D-MT Eng. Civil André Luiz Schuring CREA 8697/D-MT	ASSUNTO: BALDRAME DET ARM VIGA PEÇAS DETALHADAS V104 / V106 / V108 / V109 / V111 / V115 V117 / V123 / V126 / V127 / V128 / V129 V133 / V134 / V140
FOLHA: 1:50 DIREITOS AUTORES RESERVADOS VERIFICA MEDIDAS NA OBRA ARQUIVO:	DATA: 15/07/2019 FOLHA No. 17